



PHEIA

TECHNICAL SPECIFICATIONS

GENERAL

Type	Rhib 1050 - inboard
Classification	Lloyds Register (hull only)
Year built	2015
Port of registry	Vlissingen

DIMENSIONS

Length	10.50 m
Breath overall	3.35 m
Minimum draft	0.55 m
Operational Draft	0.70 m
Maximum draft	0.85 m

TANK CAPACITY

Fuel oil	2x 350 ltrs m ³
----------	----------------------------

PERFORMANCE

Maximum speed	50 knots
Economic speed	40 knots

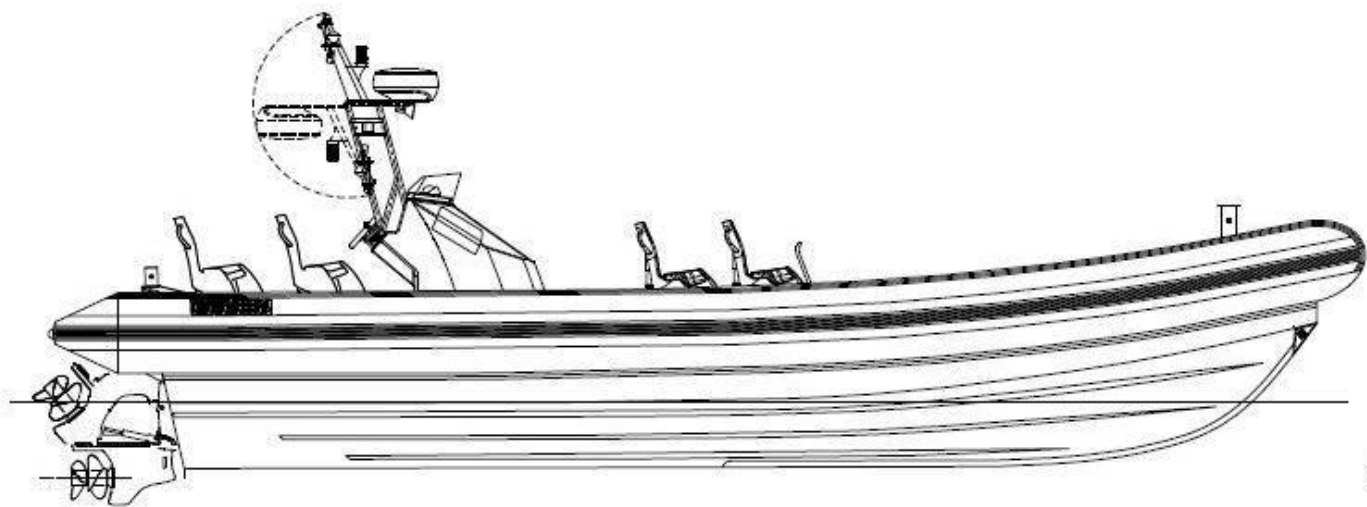
PROPULSION SYSTEM

Main engines	2x Volvo Penta, type D6
Total power	740 hp total
Propulsion	2x Volvo Penta DPR stern drive

ACCOMMODATION

Persons	10 total 2 crew + 8 passengers
---------	----------------------------------





0 point origin
Aster plan

