



SENTOSA

TECHNICAL SPECIFICATIONS

GENERAL

Type	AHT
Classification	Bureau Veritas Hull • Mach • AUT-UMS - Tug - Fire Fighting ship 1 - Water spraying / unrestricted
MMSI	248849000
IMO number	9662356
Year built	2013
Flag	Malta
Port of registry	Valetta
Call sign	9HA4833

DIMENSIONS

Length	51.80 m
Breadth overall	15.00 m
Minimum draft	6.00 m
Operational Draft	6.50 m
Maximum draft	6.70 m
Minimum air draft	26.30 m
Maximum air draft	26.30 m
Gross tonnage	1463 t
Net tonnage	439 t

TANK CAPACITY

Fuel oil	860.2 m ³
Fresh water	120.4 m ³
Lubrication oil	15.3 m ³
Dirty oil	7.4 m ³
Sewage	15.0 m ³
Bilge water	12.5 m ³

PERFORMANCE

BollardPull	120 t
Maximum speed	13,00 knots
Economic speed	8,00 knots
Horse power	2 x 3,650 bhp

PROPULSION SYSTEM

Main engines	Wartsila / 8L26A
Total power	2x 2720 kW / 2x 3646 BHP @ 1000 RPM
Propulsion	2x 4 Bladed / Kawasaki / CPP 900CB/150G / Dia: 3500 mm
Bowthruster	2x Tunnel thruster / Kawasaki / Type: KT-55B3 Dia: 1300 mm / 388 kW
Propellers	2 x CPP in Kort nozzles
Stern thruster	1 x 6 t thrust, CPP

FIFI

System	FIFI 1
Type	AZCUE / CA50/7A // 60 m ³ /hr @ 9 bar, Height 55mtr
Capacity	2x 1200m ³ / hr

DECK CRANE

Type	Tech Crane TC60-56-100
Capacity	SWL 15T @ 3 m / 10T @ 7.5 m / 1 ton @ 30 m

DECK EQUIPMENT

Free deckspace	153
Deck strength	5
Tugger winch	2x 10t @ 15m / min
Captstan	2 x 5 t @ 0 - 15m/min
Pushbow	Full length rubber fendered

AUXILIARY EQUIPMENT

Main generator sets	2x 425kW & 1x 340kW
Fuel oil transfer pump	Azcue 100 m ³ /hr
Fresh water transfer pump	Azcue 70 m ³ /hr
Fresh water maker	4m ³ every 24 hrs
Air compressor	Yes
Shaft generator	2 x 1,000 kW

ACCOMMODATION

Persons	24
Single cabin	4
Double cabin	10
Air conditioned	Yes



SEACONTRACTORS

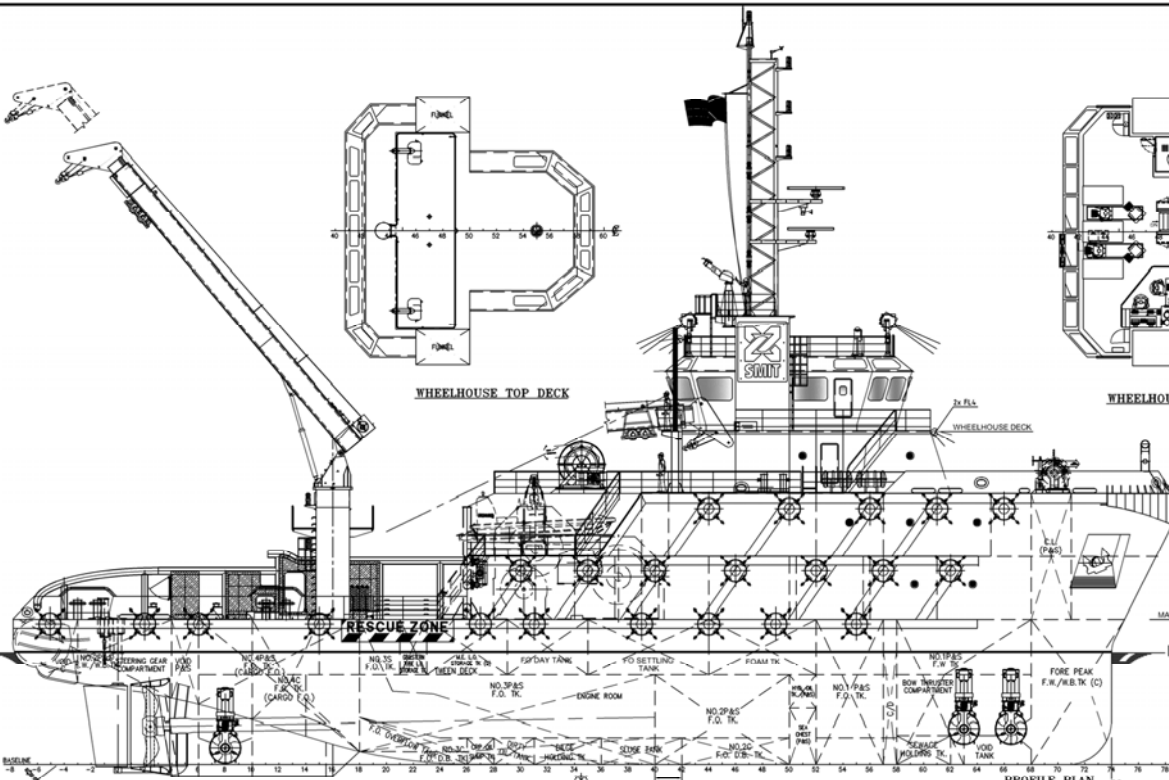
SEACONTRACTORS | VISSERIJKADE 95 | 4382 ZA VLISSINGEN | THE NETHERLANDS | T: +31 (0) 118 410 520 | WWW.SEACONTRACTORS.COM | INFO@SEACONTRACTORS.COM

The information contained in this data sheet is for guidance purposes only and may be subject to changes

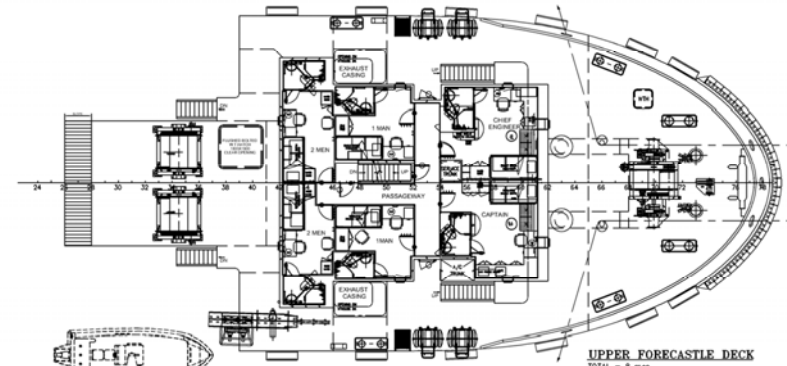
TOWING EN ANCHOR HANDLING

Towing winch	Rolls Royce / TAW 2000/2000H
Anchor Handling Winch	1 drum / 1200mtr x 64mm capacity
Drum capacities	1,200 m x 64 mm
Brake holding	275 t
Line pull @ 1st layer	200 t @ 7m/min 100 t @ 13m/min
Storage reels	3 x hydraulic 1,000 m x 64 mm
Karm Fork	2 x 300 t SWL
Towing pins	2 x closed type
Stern roller	Stern Roller (Horizontal) - 300T

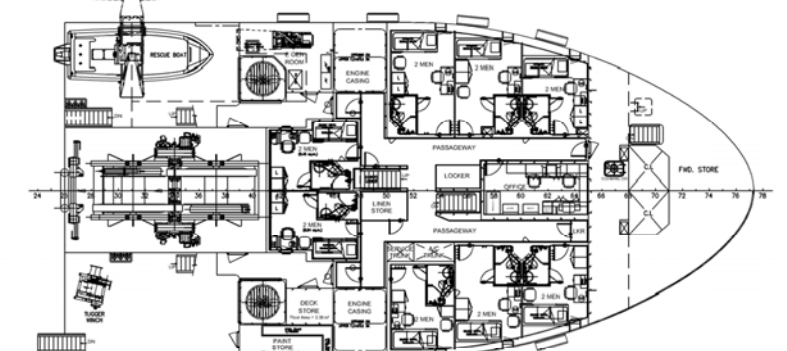




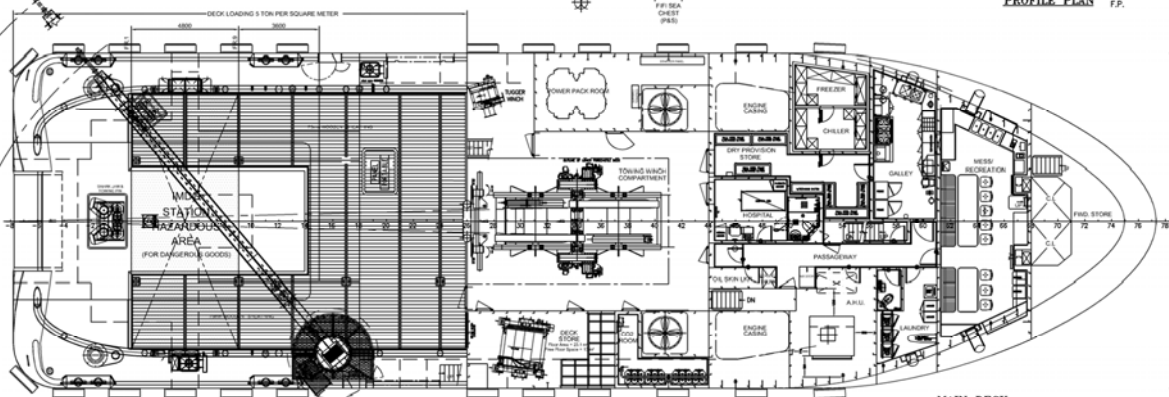
PROFILE PLAN



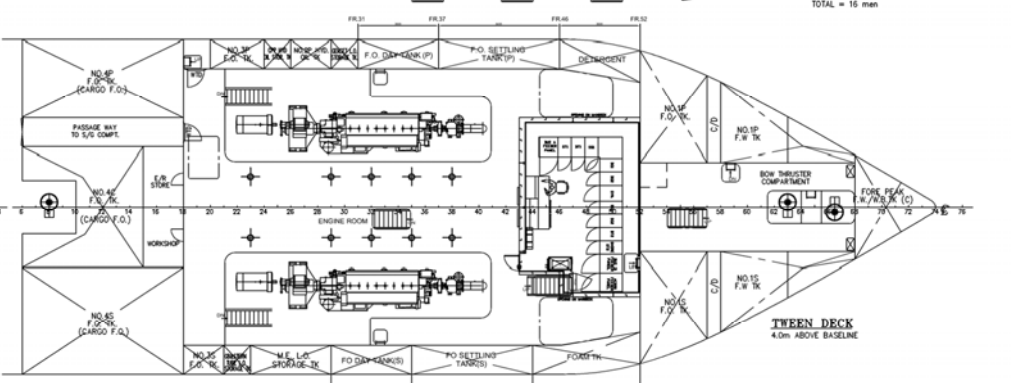
UPPER FORECASTLE DECK
TOTAL = 8 men



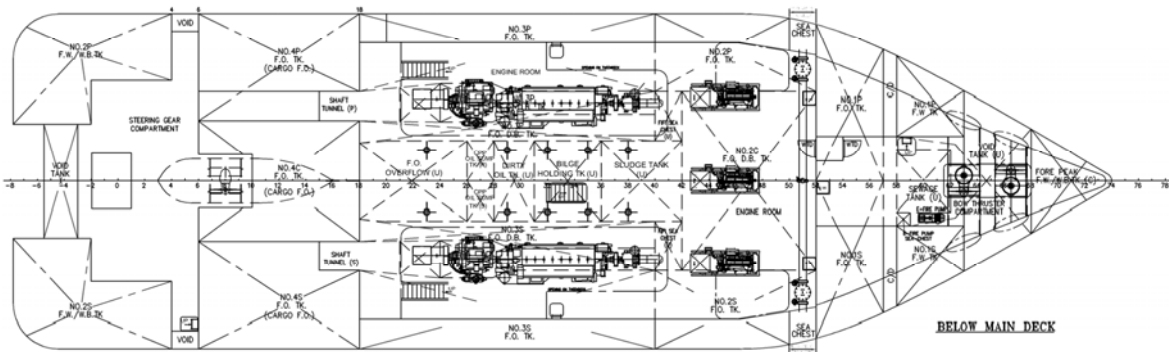
LOWER FORECASTLE DECK
TOTAL = 16 men



MAIN DECK



THIRTEEN DECK
4.0m ABOVE BASELINE



BELOW MAIN DECK

NOTE:
1. COMBINED BALLAST WATER (F.W./W.B. TK) ARE NOT DEDICATED SEAWATER BALLAST TANK.
2. CARGO F.O. FLASH POINT >60C.

PRINCIPAL PARTICULARS

LENGTH O.A	51.80m
LENGTH B.P	44.40m
LENGTH W.L @ 85%D	49.14m
BEAM MLD.	15.00m
DEPTH MLD.	6.50m
DESIGN DRAFT MLD.	5.00m
MAX. DRAFT MLD.	5.70m
COMPLEMENT	24 MEN
FUEL OIL	592.8m ³
CARGO FUEL OIL	346.1m ³

Boka DrwNo: 15-005511-01

DATE	MODIFICATION	REV	BY
SHIP: 95t B.P. A.H./TOWING TUG			
TITLE: General Arrangement			
OWNER	SMT SINGAPORE PTE LTD	YARD NO.	
BUILDER	QILANG SHIPBUILDING CO. LTD CSSC	G.01-2010-19 &	
CLASS	ABS - A1 00 - IAMS, FPI CLASS I, TOWING & ANCHOR SERVICES, UMSL	G.01-2010-20	
WARTSILA SHIP DESIGN SINGAPORE PTE. LTD.			
14 BEND CRESCENT, SINGAPORE 039777			
TEL: (65)662-1138 FAX: (65)662-1326, E-MAIL: ShipDesign.Singapore@wartsila.com			
DRAWN	CHELIA	SCALE	DRAWING NO. REV
23.05.10	24.05.10	1:125	C4688/G-1 K

THIS DRAWING AND THE INFORMATION CONTAINED HEREIN ARE SUPPLIED ON THE UNDERSTANDING THAT THEY ARE THE EXCLUSIVE PROPERTY OF WARTSILA SHIP DESIGN SINGAPORE PTE. LTD. THEY MUST NOT BE USED OR REPRODUCED IN WHOLE OR IN PART WITHOUT PERMISSION IN WRITING.