



SEA PHANAGORIA

TECHNICAL SPECIFICATIONS

GENERAL

Type	EuroCarrier 2712
Classification	Bureau Veritas • Hull • Mach • / Unrestricted
	Navigation / AUT-UMS / DYNAPOS AM/AT
MMSI	245916000
IMO number	9868522
Year built	2022 - Neptune Hardinxveld, NL
Flag	Dutch
Port of registry	Vlissingen
Call sign	PEYU

DIMENSIONS

Length	27.00 m
Breadth overall	12.00 m
Minimum draft	2.72 m
Operational Draft	3.00 m
Maximum draft	3.66 m
Minimum air draft	9.5 m
Maximum air draft	18.5 m
Gross tonnage	292 t
Net tonnage	87 t

TANK CAPACITY

Fuel oil	94.8 m ³
Fresh water	35.6 m ³
Lubrication oil	1.98 m ³
Hydraulic oil	1.91 m ³
Dirty oil	1.76 m ³
Sewage	7.28 m ³
Bilge water	10.67 m ³

PERFORMANCE

BollardPull	35 t
Maximum speed	10,00 knots
Economic speed	8,00 knots
Horse power	1938 kW

PROPULSION SYSTEM

Main engines	2x Caterpillar C32 Tier III
Total power	1940 kW at 1800 RPM
Propulsion	2x fixed propellor - 1850mm dia in nozzle
Bowthruster	300kW, tunnel thruster in SB pushbow
Propellers	2 x 1850mm
Stern thruster	250kW

DECK CRANE

Type	AFT: Heila HLRM 140-3S / FWD: Heila HLRM 280-3SL
Capacity	AFT: 26t @ 5.65m FWD: 28.8t @ 9.48m

DECK EQUIPMENT

Free deckspace	138 m ²
Deck strength	8.5t / m ²
Tugger winch	15t
Pushbow	235N/mm ²

AUXILIARY EQUIPMENT

Main generator sets	2 x Volvo D13, 2 x 360kW @ 1500 rpm, 1 x Cat C4.4, 1 x 85kW @ 150 rpm
Fuel oil transfer pump	SMEM Type 7SM3 22Kw/2955rpm
Fresh water transfer pump	VICTORPUMPEN/580G3/T+F
Powerpack	ROTOR NL- 440/690V 90kW @ 185rpm

ACCOMMODATION

Persons	14
Air conditioned	Yes

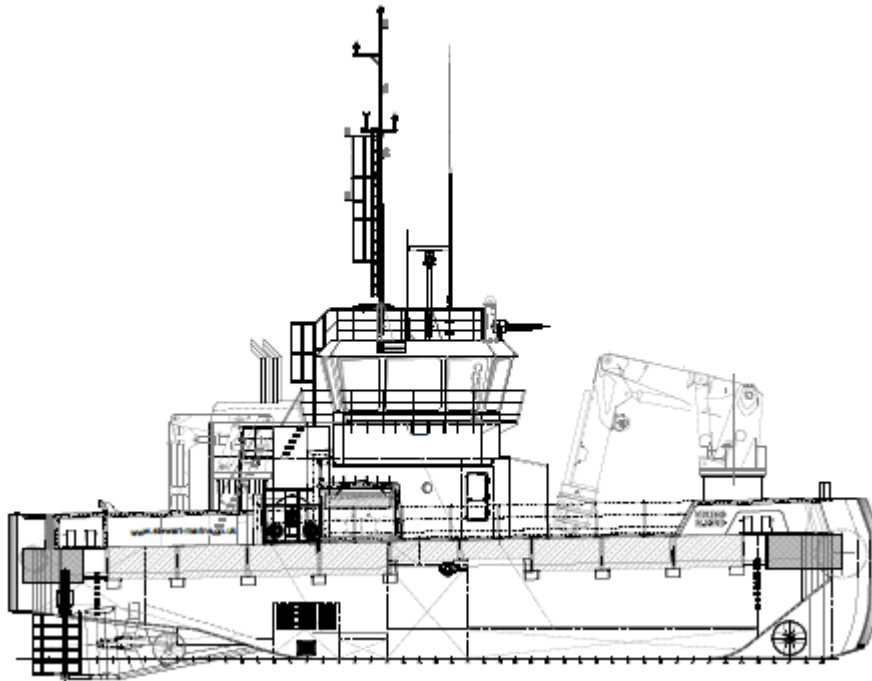
TOWING EN ANCHOR HANDLING

AH towing winch	Tecnospirit 100t / 125t (pull/hold)
Anchor Handling Winch	Tecnospirit 50t / 75t (pull/hold)
Towing pins	Aft: manual guide pins & gob eye flush in deck Fwd: hydraulic guide pins & hydraulic chainstopper
Stern roller	dia 838mm, length 5m / BOW Roller: dia 1207mm, 6 m

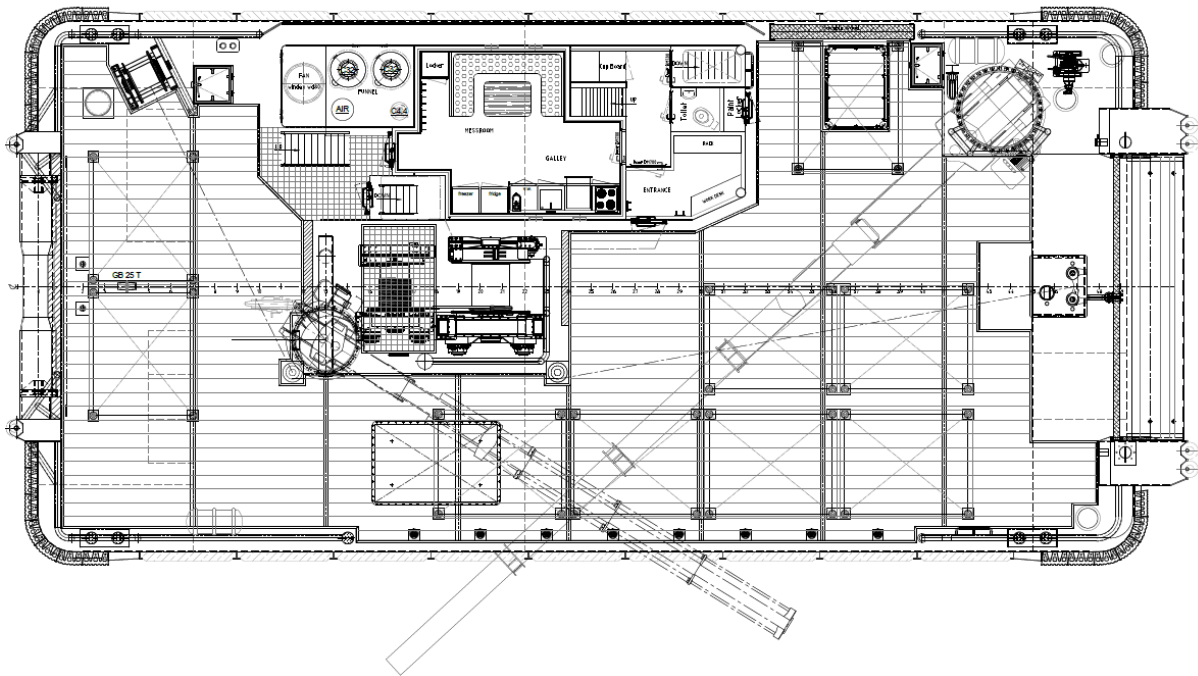
ADDITIONAL INFORMATION

Additional information	Dynampic Positioning (Class 1)
------------------------	--------------------------------





MAINDECK



ENGINE ROOM

ACCOMMODATION

