



# SEA HOTEL

## TECHNICAL SPECIFICATIONS

### GENERAL

Type	Shoalbuster 2709
Classification	Bureau Veritas • Hull • Mach • / Unrestricted
	Navigation / AUT-UMS (SS)
MMSI	244810135
IMO number	9695779
Year built	2013 - Damen Albwardy, UAE
Flag	Dutch
Port of registry	Vlissingen
Call sign	PCWS

### DIMENSIONS

Length	27,00 m
Breadth overall	9,10 m
Minimum draft	2,20 m
Operational Draft	2,60 m
Maximum draft	2,85 m
Minimum air draft	8,50 m
Maximum air draft	15,20 m
Gross tonnage	221 t
Net tonnage	66 t

### TANK CAPACITY

Fuel oil	125,2 m <sup>3</sup>
Fresh water	30,0 m <sup>3</sup>
Lubrication oil	3,9 m <sup>3</sup>
Hydraulic oil	1,5 m <sup>3</sup>
Dirty oil	4,3 m <sup>3</sup>
Sewage	2,2 m <sup>3</sup>
Bilge water	4,3 m <sup>3</sup>

### PERFORMANCE

BollardPull	40,3 t
Maximum speed	12,00 knots
Economic speed	8,00 knots
Horse power	3040

### PROPULSION SYSTEM

Main engines	2x CAT 3512 B
Total power	2.238 kW / 3040 bhp
Propulsion	2x Solid screw propeller Inox4, 362 rpm
Bowthruster	200 bhp, hydraulic driven

### DECK CRANE

Type	Heila HLRM 0140-4SL
Capacity	5,30 t @ 18,00 m

### DECK EQUIPMENT

Free deckspace	55,0 m <sup>2</sup>
Deck strength	2,0 t/m m <sup>2</sup>
Tugger winch	Promac 12 t
Pushbow	Full length rubber fendered

### AUXILIARY EQUIPMENT

Main generator sets	2x CAT 4.4 TA
Fuel oil transfer pump	32 m <sup>3</sup> /h @ 1.5 bar
Fresh water transfer pump	32 m <sup>3</sup> /h @ 1.5 bar
Fresh water maker	HEM 4,5 m <sup>3</sup> /24h
Air compressor	2x ABAC 2 times 19m <sup>3</sup> /h 9 bar
Powerpack	1x CAT C9 TA

### ACCOMMODATION

Persons	7
Single cabin	3
Double cabin	2
Air conditioned	Yes

### TOWING EN ANCHOR HANDLING

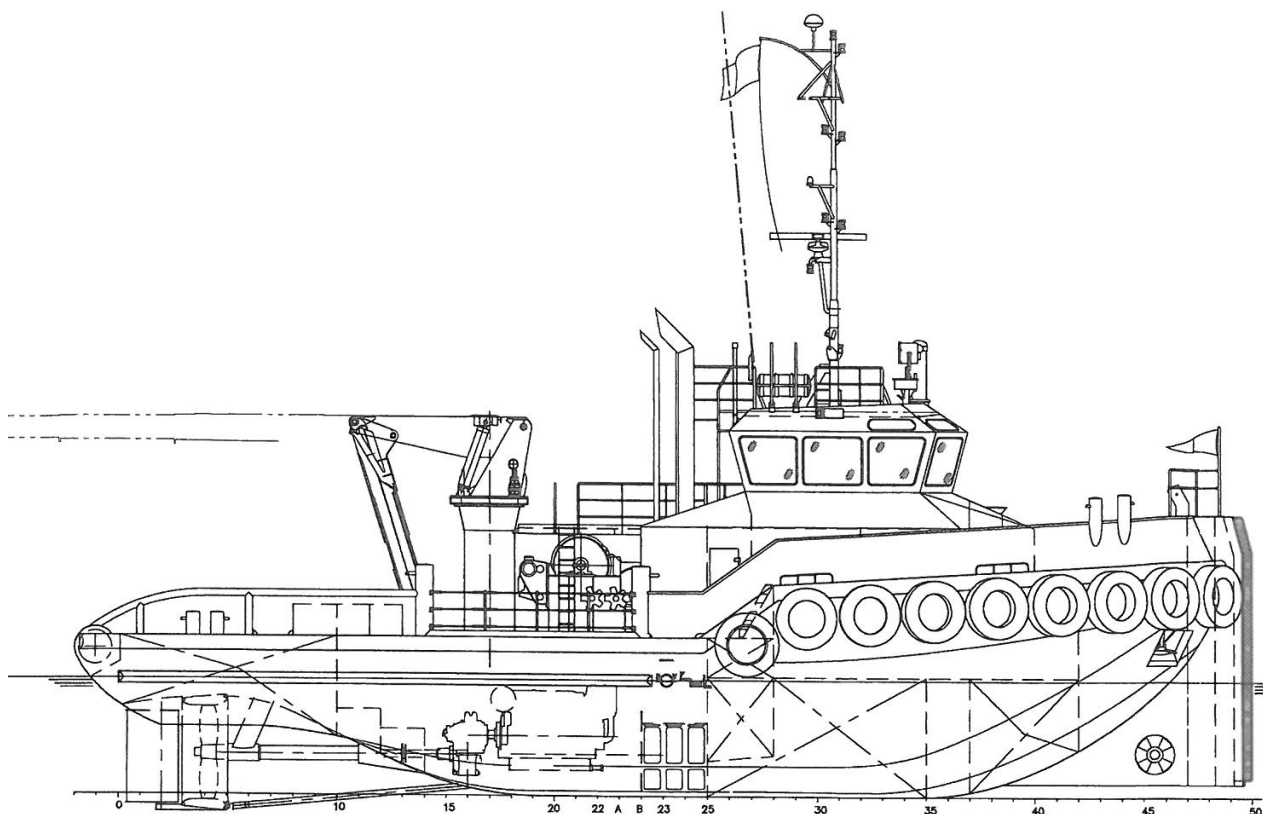
Towing winch	DMT Waterfall 50 t / 120 t (pull/hold) 600 m x 40 mm
Anchor Handling Winch	100 t / 120 t (pull/hold) 600 m x 40 mm
Towing pins	S
Stern roller	SWL 50t



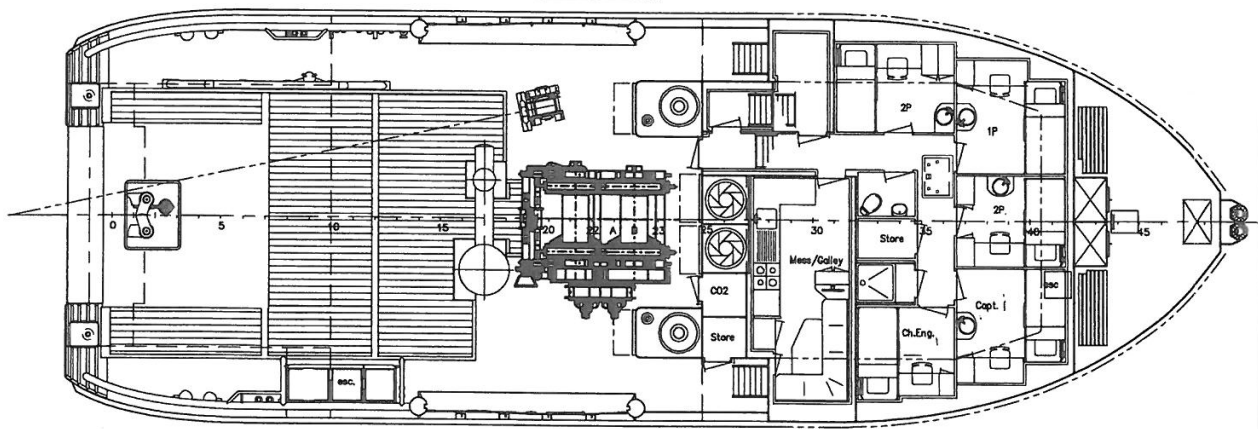
**SEACONTRACTORS**

SEACONTRACTORS | VISSERIJKADE 95 | 4382 ZA VLISSINGEN | THE NETHERLANDS | T: +31 (0) 118 410 520 | WWW.SEACONTRACTORS.COM | INFO@SEACONTRACTORS.COM

The information contained in this data sheet is for guidance purposes only and may be subject to changes



Maindeck



Below maindeck

