



# MTS STATUM

## TECHNICAL SPECIFICATIONS

### GENERAL

Type	Shoalbuster 3009
Classification	Bureau Veritas • Hull • Mach • / Unrestricted
	Navigation / AUT-UMS (SS)
MMSI	375767000
IMO number	9510670
Year built	2008 - Damen Hardinxveld, NL
Flag	St Vincent and The Grenadines
Port of registry	Kingstown
Call sign	J8B5265

### DIMENSIONS

Length	30,08 m
Breadth overall	9,10 m
Minimum draft	2,90 m
Operational Draft	3,00 m
Maximum draft	3,20 m
Minimum air draft	10,30 m
Maximum air draft	16,00 m
Gross tonnage	309 t
Net tonnage	92 t

### TANK CAPACITY

Fuel oil	174,90 m <sup>3</sup>
Fresh water	40,90 m <sup>3</sup>
Lubrication oil	7,30 m <sup>3</sup>
Hydraulic oil	3,10 m <sup>3</sup>
Dirty oil	4,30 m <sup>3</sup>
Sewage	3,30 m <sup>3</sup>
Bilge water	4,30 m <sup>3</sup>

### PERFORMANCE

BollardPull	50 t
Maximum speed	11,00 knots
Economic speed	9,00 knots
Horse power	3300

### PROPULSION SYSTEM

Main engines	2x Caterpillar 3512B TA/C, 12 cyl, 1600 rpm
Total power	2.460 kW / 3300 bhp
Propulsion	2x Promarine fixed pitch propellor
Bowthruster	250 bhp, hydraulic driven

### DECK CRANE

Type	Heila HLRM 170-3SL
Capacity	5,30 T @ 18,03 m

### DECK EQUIPMENT

Free deckspace	65,0 m <sup>2</sup>
Deck strength	15,0 t/m m <sup>2</sup>
Tugger winch	8 t
Pushbow	Full length rubber fendered

### AUXILIARY EQUIPMENT

Main generator sets	2x Caterpillar C4.4 TA
Fuel oil transfer pump	VWSI 8020,50 m/h @4,8 bar
Fresh water transfer pump	VWSI 8020,50 m/h @4,8 bar
Fresh water maker	HEM 4 m <sup>3</sup> every 24h
Air compressor	B5900/Peerless 300
Powerpack	CAT C-18 TA

### ACCOMMODATION

Persons	7
Single cabin	3
Double cabin	2
Air conditioned	Yes

### TOWING EN ANCHOR HANDLING

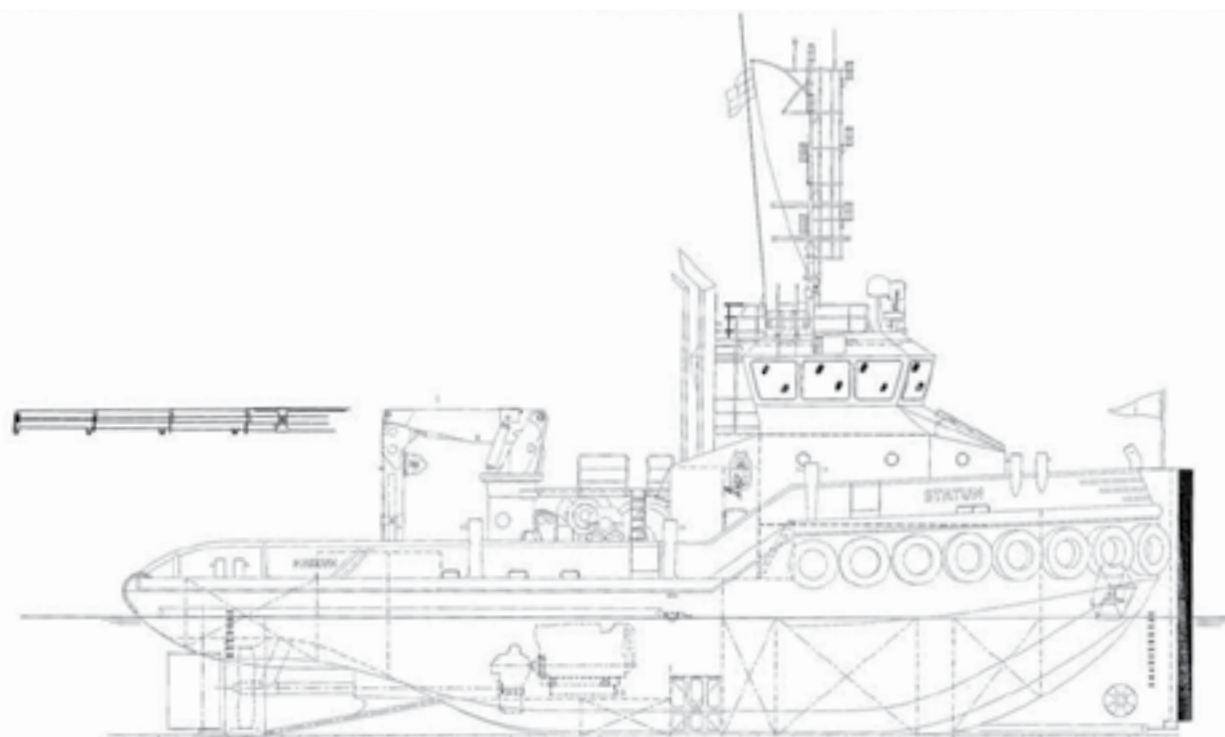
Towing winch	Ridderinkhof Waterfall 50t / 100t (pull/hold) 750m x 44mm
Anchor Handling Winch	100 t / 100 t (pull/hold) 600 m x 40 mm
Towing pins	3-in row + Shark Jaw Fork
Stern roller	SWL 100t



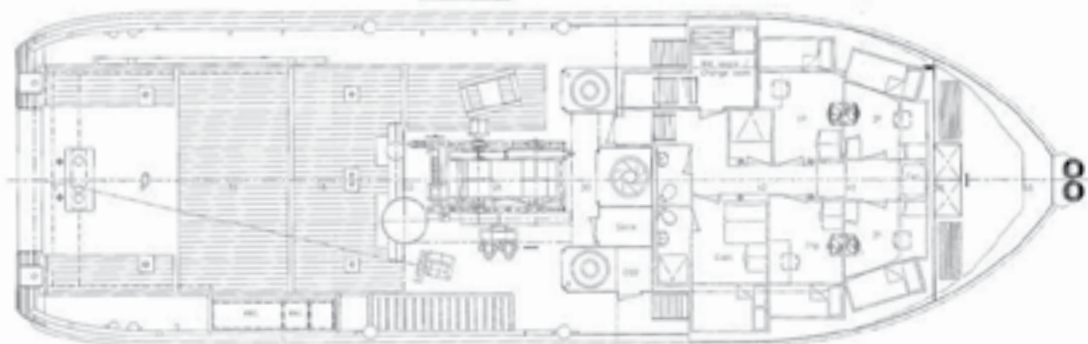
SEACONTRACTORS

SEACONTRACTORS | VISSERIJKADE 95 | 4382 ZA VLISSINGEN | THE NETHERLANDS | T: +31 (0) 118 410 520 | WWW.SEACONTRACTORS.COM | INFO@SEACONTRACTORS.COM

The information contained in this data sheet is for guidance purposes only and may be subject to changes



Maindeck



Below maindeck

